

# GENERAL LASHING SYSTEM CO., LTD

## General Lashing System Co., Ltd

**Address:** No. 2113 South Ningheng Road, Ningbo, China  
**Tel:** +86-0574-88068950 / +86-0574-88034500  
**Fax:** +86-0574-88078957  
**Email:** sailes10@generallashing.com

## Ningbo General International Trading CO., Ltd

**Address:** 11/F, DIQU PLAZA, No.666, Taikang Middle Road, Ningbo, China  
**Tel:** +86-0574-88092950  
**Email:** sailes10@generallashing.com

## General Lashing System Co., Ltd (Shanghai Office)

**Address:** Room 223, Building 8, Shengyu Industrial Park,  
365 Chuanhong Road, Pudong New Area, Shanghai, China  
**Email:** sailes10@generallashing.com





# COMPANY QUALIFICATION

## GENERAL LASHING SYSTEM CO., LTD

Ningbo General Lashing System Co., Ltd. (GLS) was founded in 1998, is a global service provider of lashing materials, specializing in the overall design of the container securing and lashing solutions, production and self-sales of lashing materials.

Guided by the experience of the past 20 years, we have always been customer-centric and committed to providing more advanced design, the best quality products and more efficient service for the lashing industry.

Our business covers container ship, roll-on/roll-off, timber and multi-purpose ship lashing products. We also provide various kinds of transportation lashing products and services and can provide personalized cargo stowage solutions according to customer requirements.

Our company has own independent production plant. The factory has been built to high standards since the beginning of its establishment and has advanced manufacturing technology and craftsmanship for container lashing products. The comprehensive and high-level supporting supply chain system can provide extremely competitive prices and punctual product supply.

Our company has a professional quality management team and complete quality control procedures. The factory has passed the ISO9001-2015/ISO4001-2015/ ISO45001-2018 system certification issued by BV. GLS has always been at the forefront of normalized, standardized and scientific modern enterprise management.

With the vigorous development of the shipping industry, GLS's high-level technical team has continuously upgraded product performance, and has always insisted on providing customers with industry benchmark products that are both innovative and safe. All of our company's products have been certified by various classification societies around the world.

Through conscientious exploration, GLS will continue to strictly implement the quality management system and to improve the effectiveness of the system's operation. We will work hard to raise the work of the enterprise management system to a new height and strive to achieve the ultimate goal of providing customers with higher quality products and services!

### OUR GOAL

THE WORLD-CLASS SERVICE PROVIDER OF LASHING SYSTEM

### OUR VALUE

PROFESSION, CONCENTRATION, PERFECTION COOPERATION, SINCERITY, WIN-WIN

### OUR PHILOSOPHY

QUALITY PRIOR, CUSTOMER FOREMOST





**1998**

Established a precision casting factory to provide OEM service for MacGregor, Germanlashing, Allset and other lashing parts customers.

**2006**

GLS was established, started design and self-sale of lashing parts. The ISO9001 factory management system certification was obtained at the same year.

**2008**

Reached a cooperation with MSC to provide the supply service of lashing parts.

**2007**

CCS/GL product approval certificate equipped, Singapore agent (HR) signed and entered the South Asian market.

**2009**

Set up a new building design team and start to provide lashing solution design services.

**2010**

Equipped with BV/ABS/LR certificate, started the cooperation with Singapore PIL/Xpress.

**2011**

Equipped with KR/NK/RS/RINA certificate, signed the agent in the Netherlands(VD), and entered the European market.

**2012**

United States agent (PMI) signed and entered the American market, began to cooperate with customers like Matson.

**2013**

Started lashing design and product sales services for ro-ro ships and timber ships.

**2014**

Signed the 4800TEU new ship business of Zhengshuntek, signed the agency (FT) in South Korea, entered the Korean market, and cooperated with SINOKOR and other customers.

**2015**

Greek agent (SP) signed and entered the Greek and Cyprus market.

**2016**

Signed with Turkey (GO) and Dubai agent (TR) to enter the Eastern European and Middle Eastern markets.

**2017**

Signed with customers such as SPIL/ML to enter the Indonesian market.

**2018**

Started to cooperate with Maersk North America (MSK) and independently develop the first generation of automatic twistlock.

**2019**

Developed the Chinese market and started cooperation with Zhonggu Shipping, Antong and other companies.

**2020**

In the global epidemic environment, the company achieved annual sales growth of more than 21.6%.

**2021**

Establish the development goals for the next ten years and write a new chapter for GLS in the future.

The following companies are the global agents of GLS, providing customers with the most efficient global port supply services.

## CONTACTS:

### European

**Van Doorn Container Parts BV**  
v.Weerden Poelmanweg 19  
3088 EA Rotterdam  
Nederland

### Singapore

**General Import & Export International Pte. Ltd.**  
10 Anson Road #13-15 International Plaza,  
Singapore

### United States

**PACIFIC MARINE & INDUSTRIAL**  
P.O. Box 70520  
Richmond, California, United States 94807

### Korea

**Fine Trading Co.,Ltd**  
#1111, Kookje O/T, 263, Jungang-daero,  
Dong-gu, Busan, Korea

### Dubai

**TROTECHCO.L.L.C**  
P.O.BOX: 15041, DUBAI, U.A.E.

### Turkey

**GOVER CELIK HALAT**  
Evliya Celebi Mah. Ummet Sk. No:6/1-2  
34944 Tuzla - Istanbul - TURKEY

### Greece

**KATRADIS**  
11 Psaron Street, 186 48 Piraeus, Greece



### China

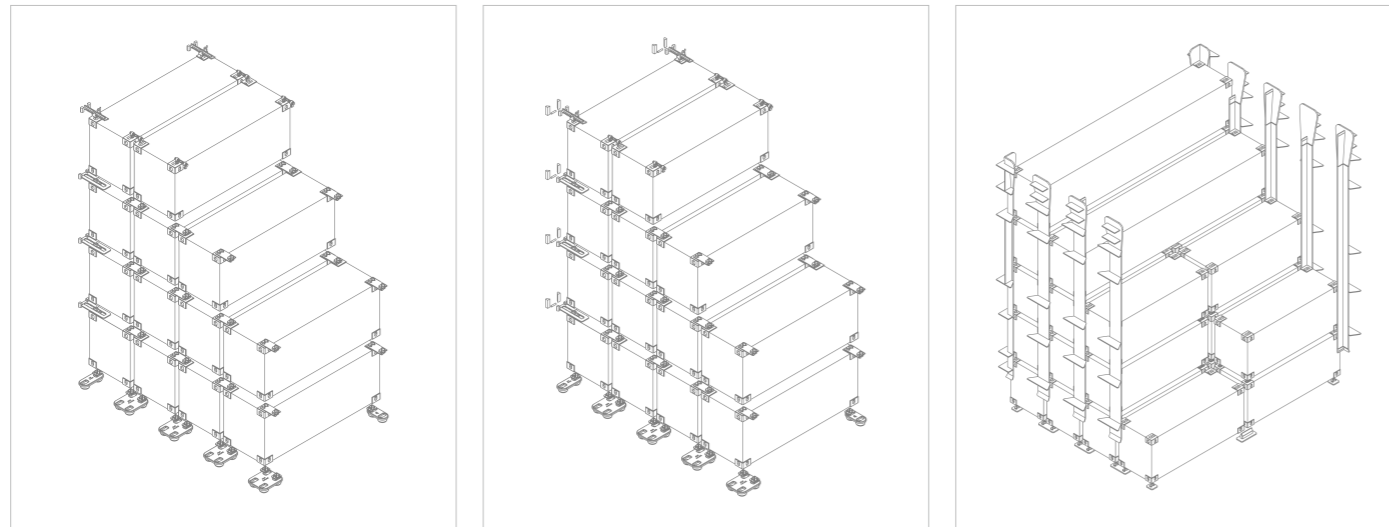
**GENERAL LASHING SYSTEM CO., LTD**  
Address: No. 2113 South Ningheng Road, Ningbo, China  
Website: [www.generallashing.com](http://www.generallashing.com)

GLS has a strong and professional technical team, it aims to provide lashing plan design, lashing calculation and cargo securing manuals that meet the different requirements of major classification societies for container ships, multi-purpose ships and various transportation industries. Our company adopts various lashing software of the classification societies and related professional design software to make the high-quality lashing plan that not only meet but also exceed the standards in accordance with the requirements of the hull stack weight and the needs of the shipowner.

Whether it is the design of cell guides, stanchions or lashing bridges, we are dedicated to providing careful and reliable operation guidance for every cargo loading. If you want to switch to our lashing products on your ship, we can also provide the modification service of the securing manual to take care all your worries. By choosing us, you can get a very professional and suitable container lashing solution in the early stage of the project.

## CONTAINER SECURING SYSTEMS

### Container Securing System in Hold

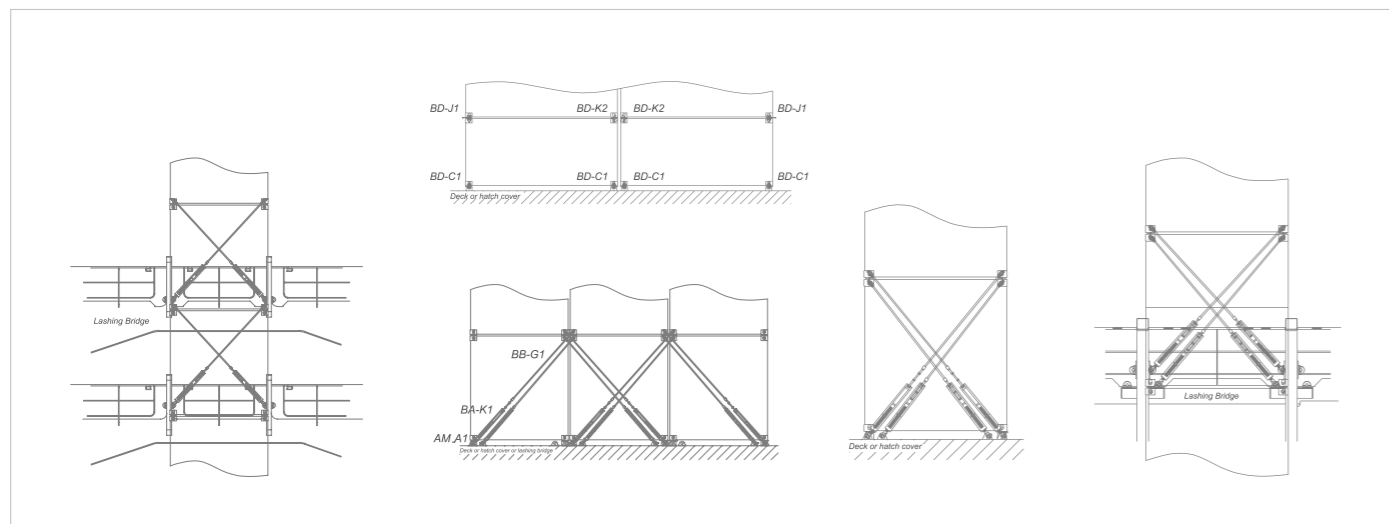


Pressure System

Tension Pressure System

Cellguides in Hold

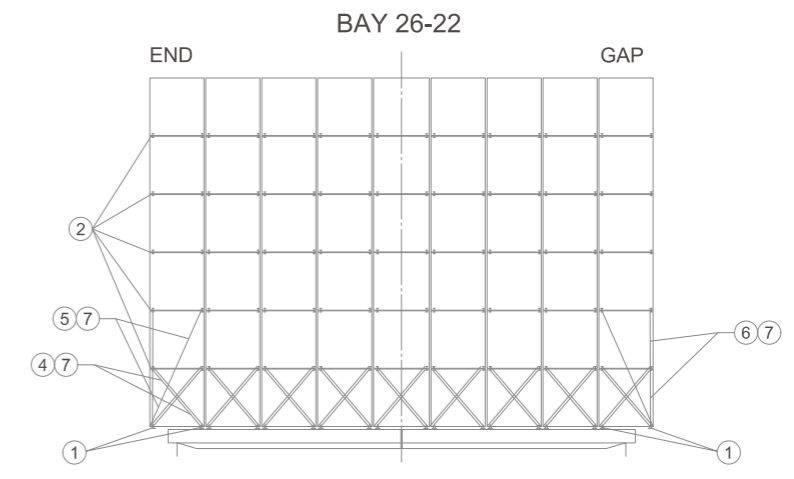
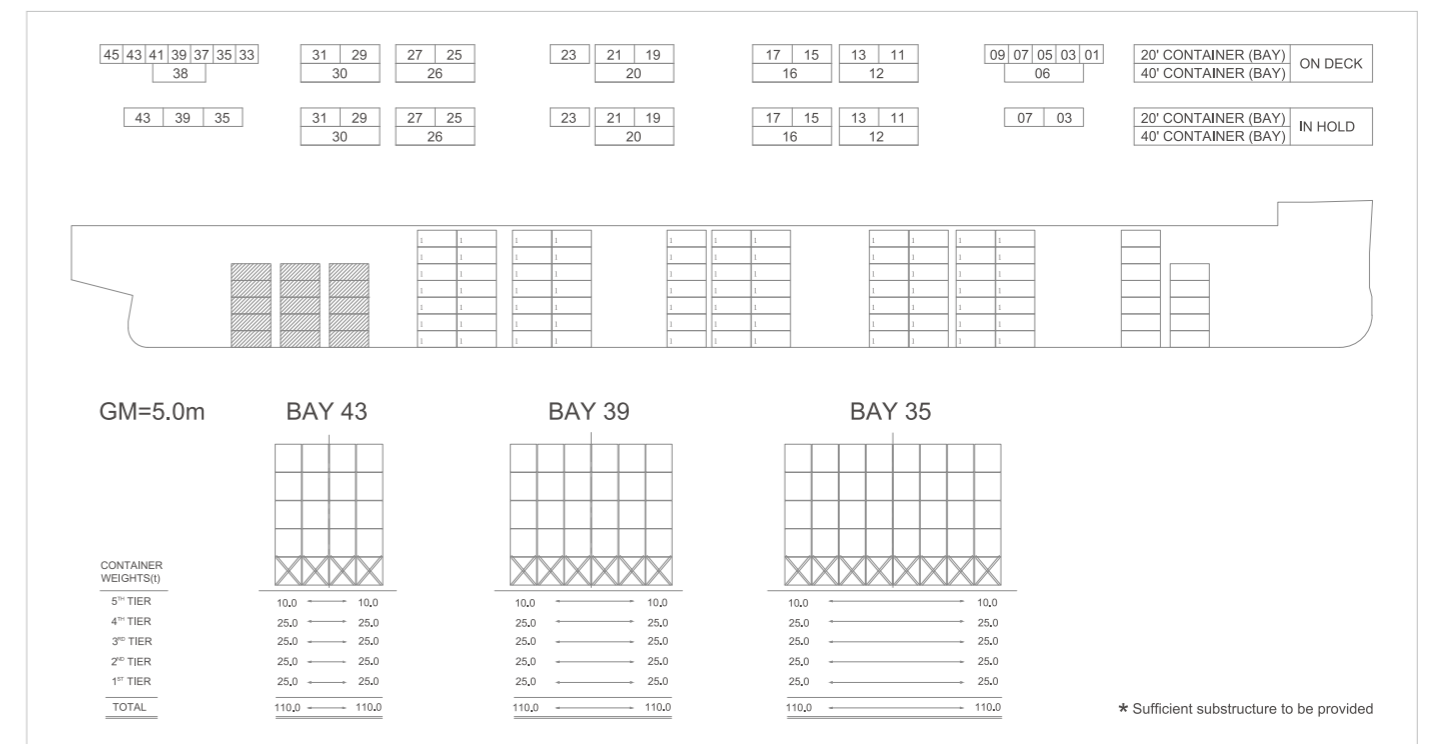
### Container Securing System on Deck



### Lashing Calculation



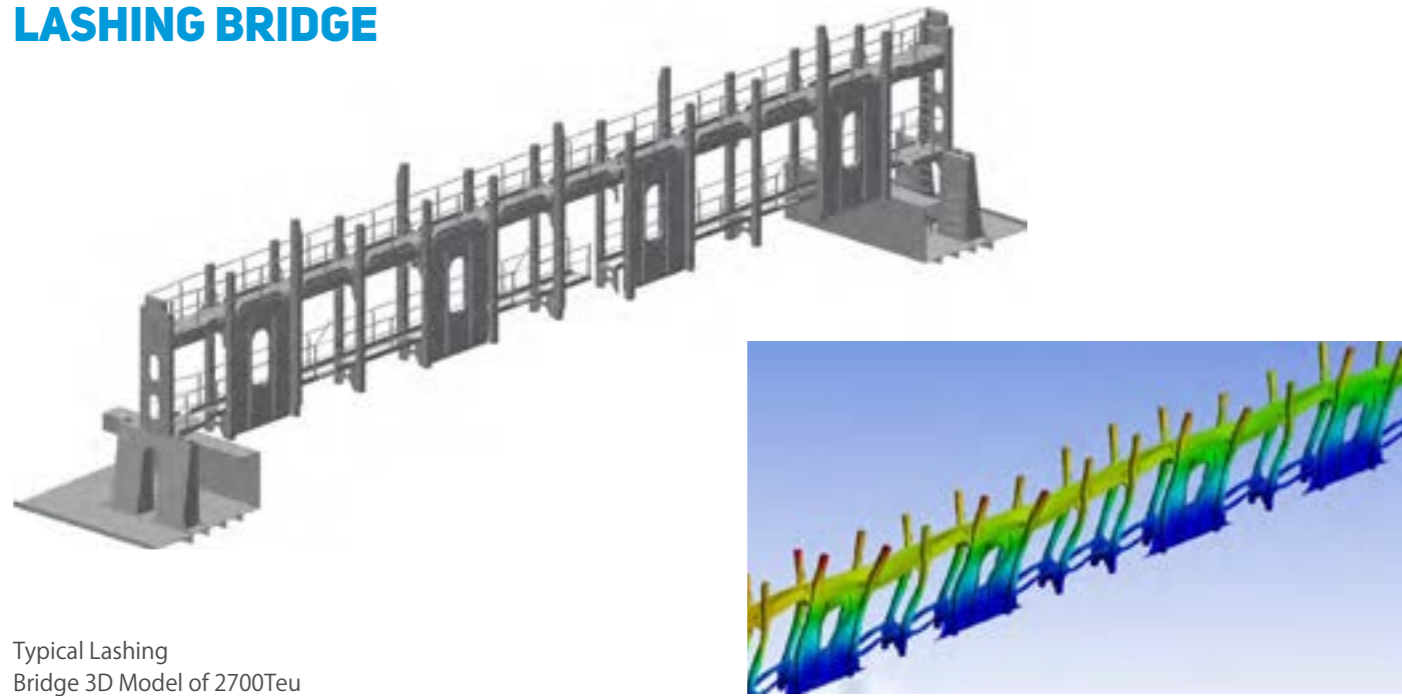
### Container Securing Arrangement



③ midlock BD-K2		⑥ lashing bar(vertical type) BB-F1/4430		⑨	
② semi-automatic twistlock BD-J1		⑤ lashing bar(knob type) BB-C1/5000		⑧ lockable stacking cone BC-G3	
① large seat twistlock BD-C1		④ lashing bar(knob type) BB-C1/2500		⑦ turnbuckle(knob type) BA-K1	
NO./MODEL		NO./MODEL		NO./MODEL	

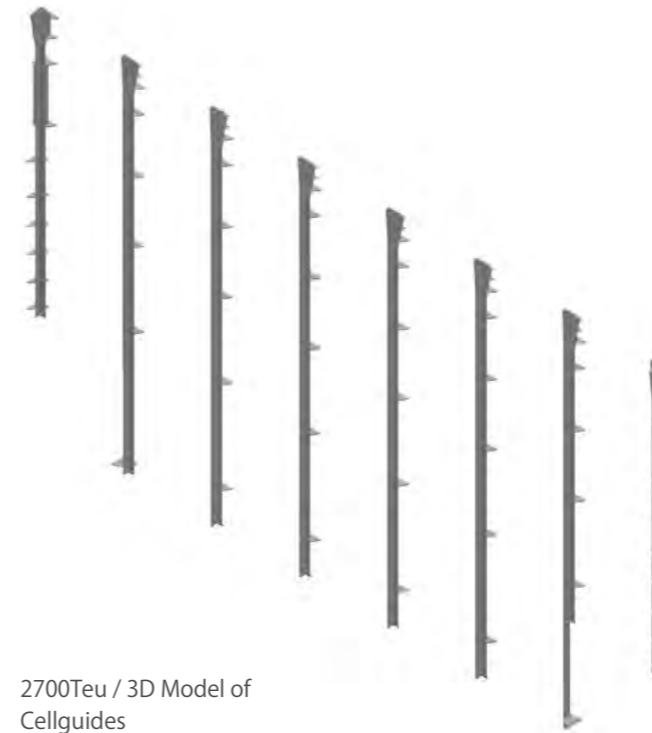


## LASHING BRIDGE

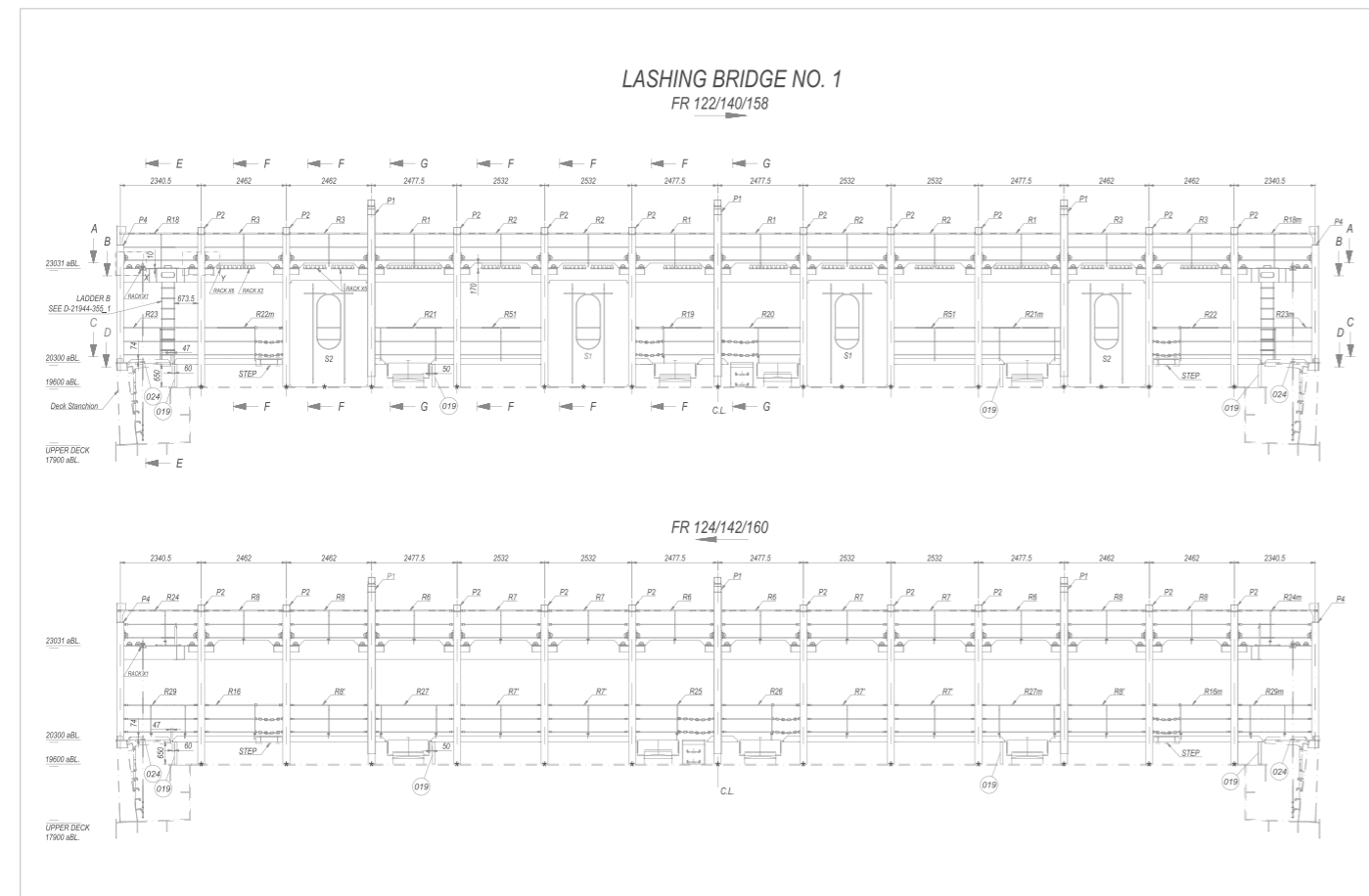
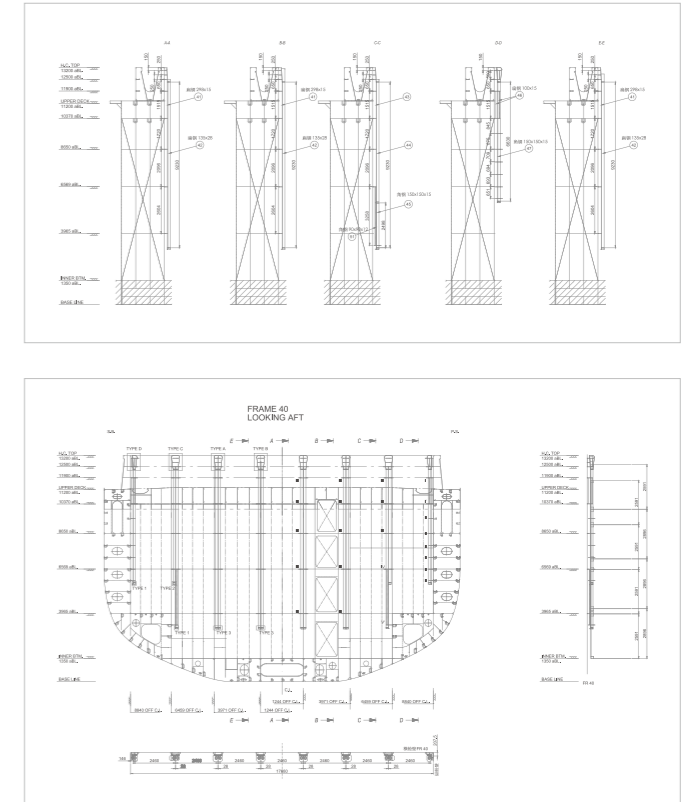


Typical Lashing Bridge 3D Model of 2700Teu

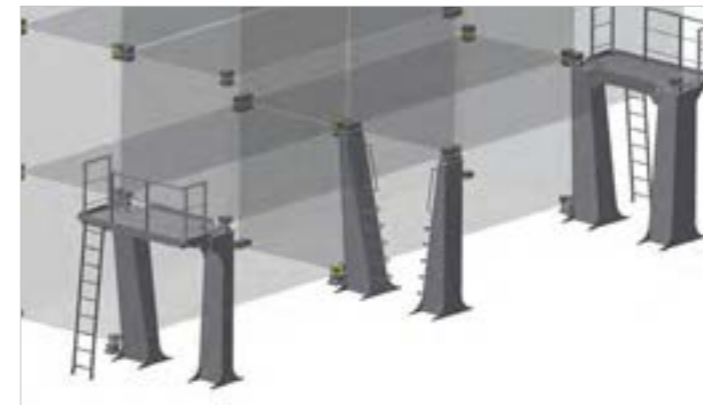
## CELL GUIDES IN HOLD



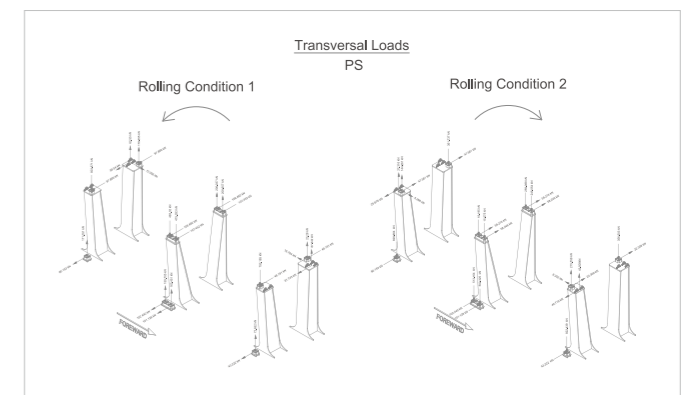
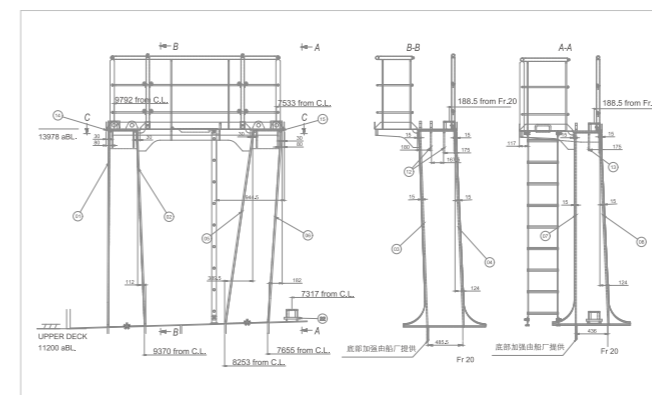
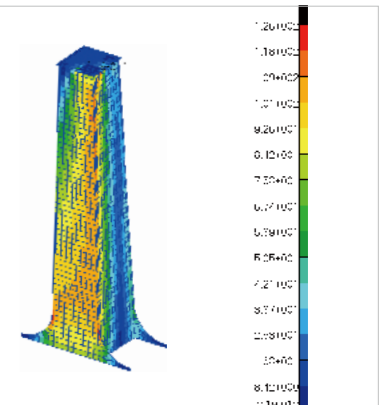
2700Teu / 3D Model of Cellguides



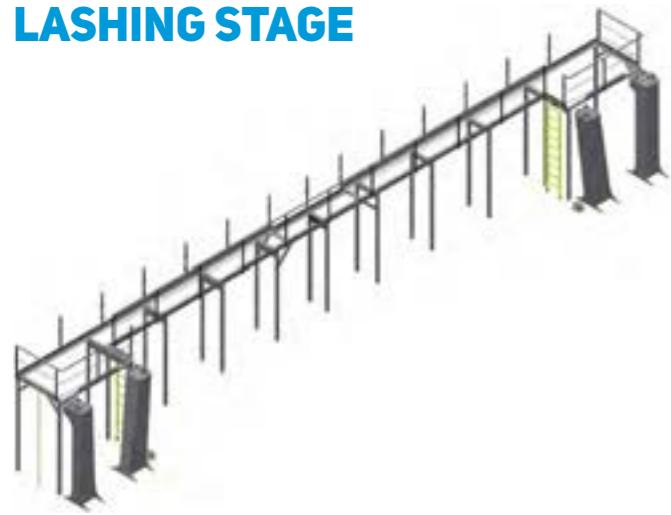
## DECK STANCHION



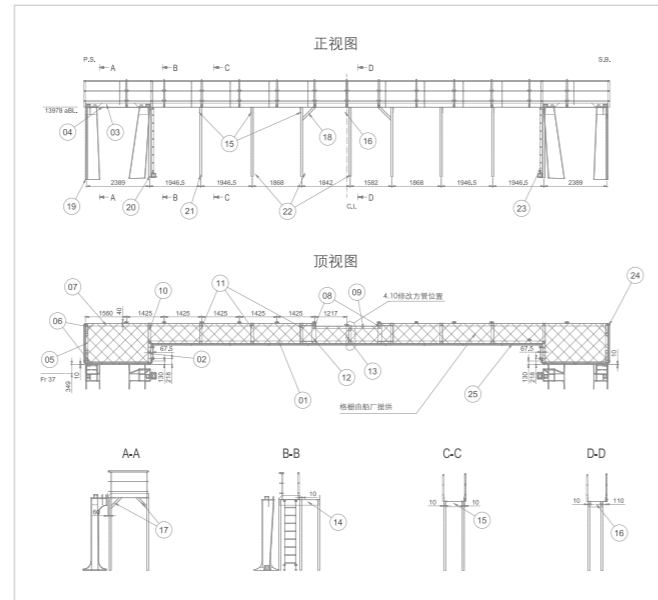
Finite element stress analysis of deck column



## LASHING STAGE

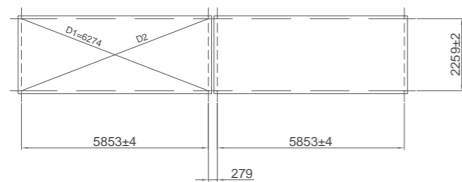


3D Model of Lashing Stage



## OFFSET PLAN

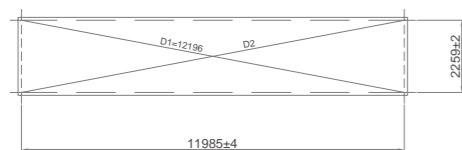
### 20' CONTAINER



### DIFFERENCE OF DIAGONALS

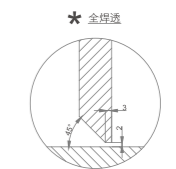
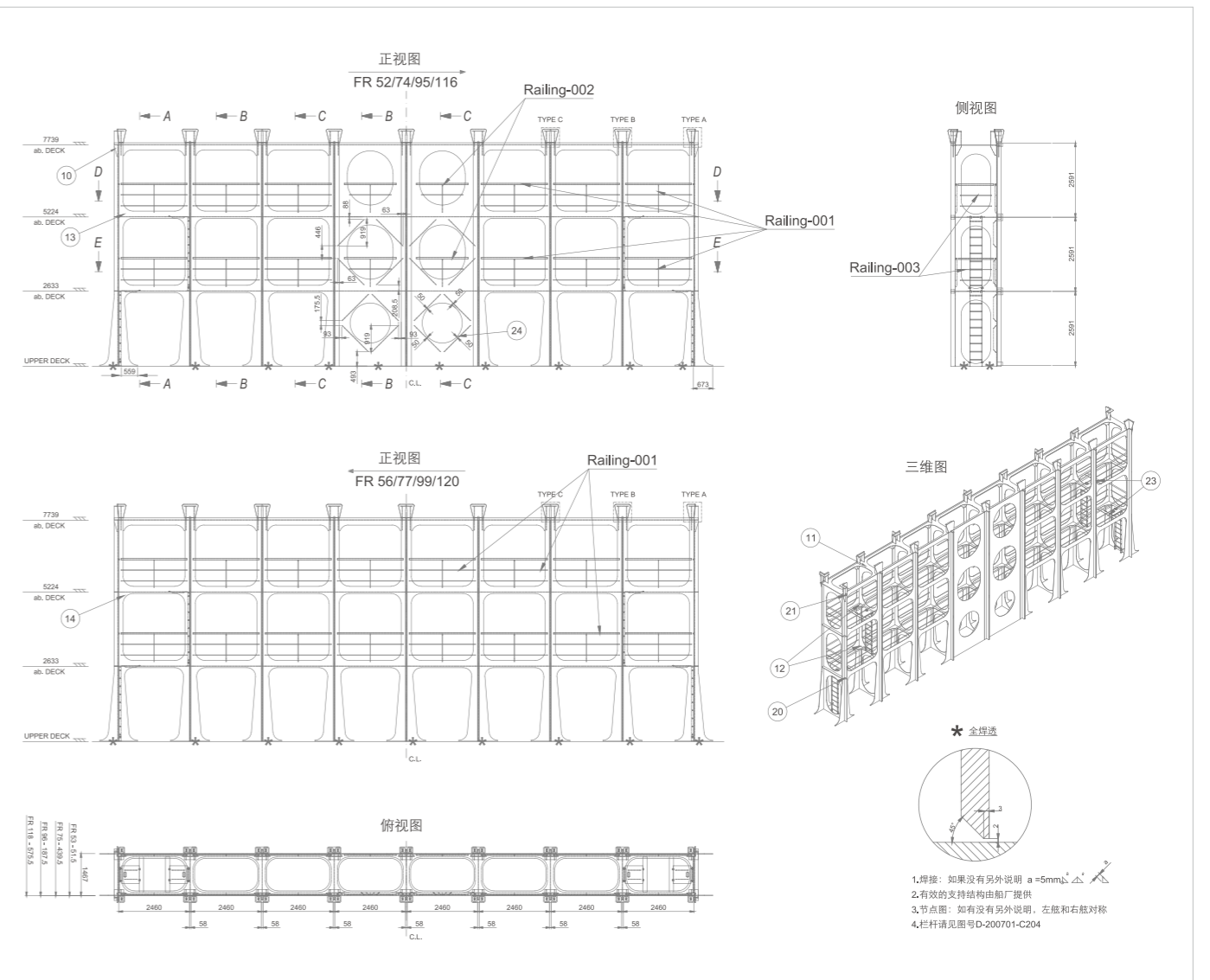
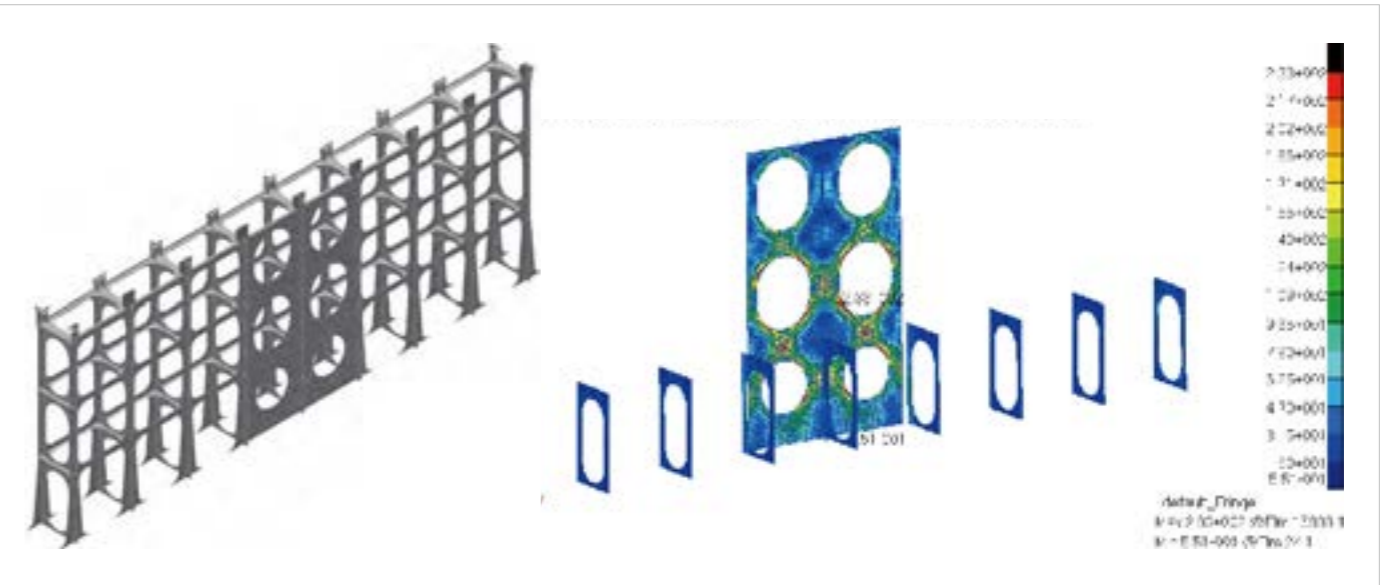
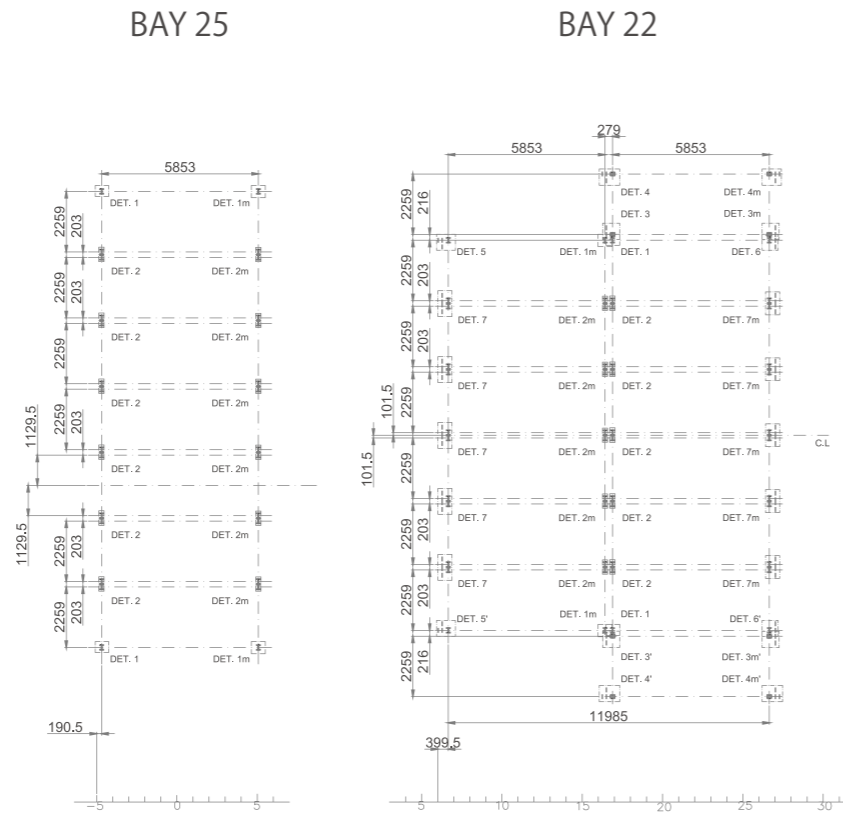
D1 - D2  
Should not be more than:  
20' cont. - 6 mm  
40' cont. - 8 mm

### 40' CONTAINER



### HEIGHT TOLERANCES OF CONTAINER FOUNDATIONS

Transverse:  
1 point is reference, the others ± 3 mm  
Longitudinally:  
± 6 mm to reference point

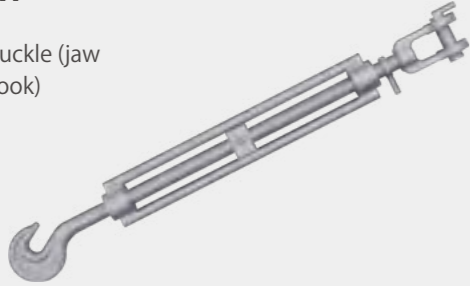


1. 焊接: 如果没有另外说明 a = 5mm
2. 有效的支持结构由加厂提供
3. 节点图: 如果没有另外说明, 左低和右对称
4. 栏杆请见图号 D-200701-C204

# LOOSE FITTINGS ON DECK

**BA-A1**

Turnbuckle (jaw  
and hook)



**BA-K1**

Turnbuckle (knob  
type)



**BB-B1**

Lashing bar



**BB-C1**

Lashing bar (knob  
type)



**BB-F1**

Vertical lashing bar



**BB-G1**

External lashing bar



**BB-E1**

Extension hook



**BB-D1**

Extension rod



# LOOSE FITTINGS ON DECK

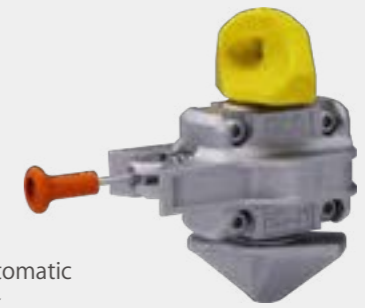
**BD-SL**

Fully-automatic  
twistlock



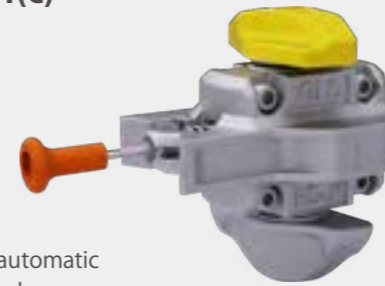
**BD-J1**

Semi-automatic  
twistlock



**BD-J1(C)**

Semi-automatic  
twistlock



**BD-J2**

Semi-automatic  
twistlock (large seat)



**BD-K2**

Mid lock



**BD-K3**

Mid lock



**BD-V2**

Semi-automatic  
twistlock (dual handle)



**BD-V2(G)**

Semi-automatic  
twistlock (large seat)





**BD-A2**



Manual twistlock

**BD-C1**



Manual twistlock  
(large seat)

**BD-D1**



Dovetail  
twistlock 45°

**BD-D2**



Dovetail  
twistlock 45°

**BD-E1**



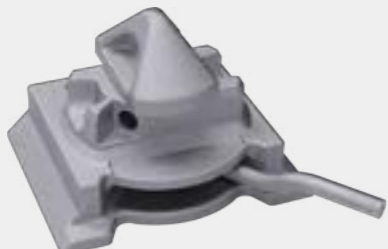
Dovetail  
twistlock 55°

**BD-E1(150)**



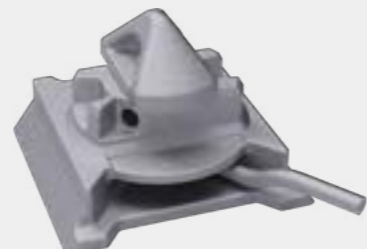
Dovetail  
twistlock 55°

**BD-F1**



Dovetail  
twistlock 45°

**BD-G1**



Dovetail  
twistlock 55°

**BC-A3(C)**



Single  
stacking cone

**BC-A3(D)**



Single  
stacking cone

**BC-G2(B)**



Lockable  
stacking cone

**BC-G2(C)**



Hanging  
stacking cone

**BC-G2(B/28)**



Lockable  
stacking cone

**BC-G4(B)**



Hanging  
stacking cone

**BC-G3(B)**



Lockable  
stacking cone

**BC-G3(C)**



Hanging  
stacking cone

# LOOSE FITTINGS IN HOLD

# FIXED FITTINGS ON DECK

**BC-C1**



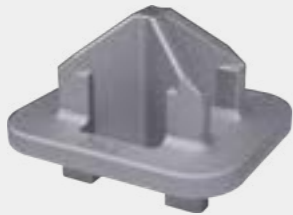
Double stacking cone

**BC-C1(279)**



Double stacking cone

**BC-B3**



Bottom stacking cone

**BC-D1**



Double bottom stacking cone

**BE-A1**



Bridge fitting

**BE-B1**



Bridge fitting

**BF-A1**



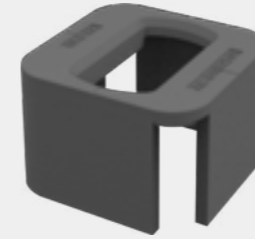
Top tension pressure element

**BF-B1**



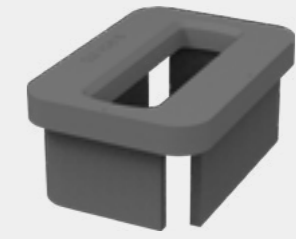
Tension pressure element

**AC-B1(D)**



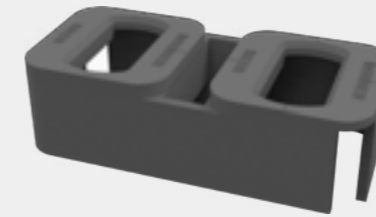
Single raised foundation

**AC-B1(B)**



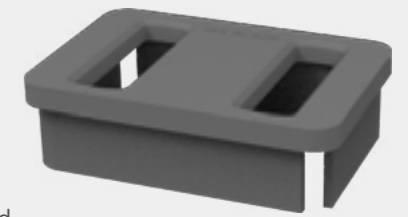
Elongated single raised foundation

**AC-B2(D)**



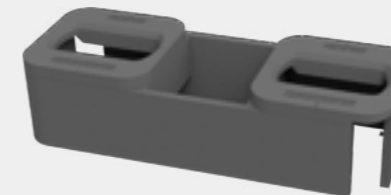
Double raised foundation

**AC-B2(B)**



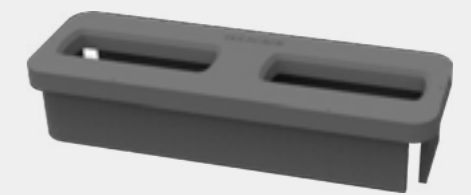
Elongated double raised foundation

**AC-B2(D/279)**



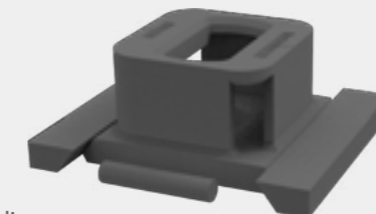
Double raised foundation

**AC-B2(B/279)**



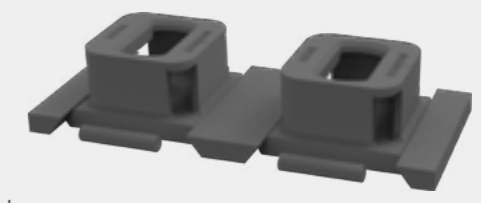
Elongated double raised foundation

**AC-B1(D/L)**



Single sliding foundation

**AC-B2(D/L)**



Double sliding foundation



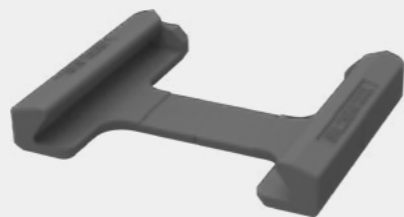
# FIXED FITTINGS ON DECK

**AE-A1**



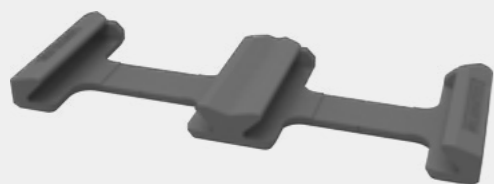
Single dovetail  
plate 45°

**AE-B1**



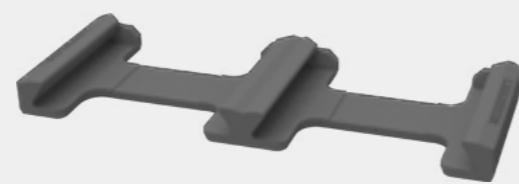
Single dovetail  
plate 55°

**AE-A2**



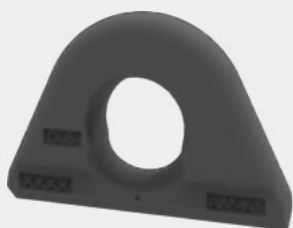
Double  
dovetail plate 45°

**AE-B2**



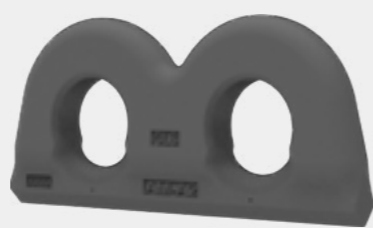
Double  
dovetail plate 55°

**AM-A1**



Single  
lashing plate

**AM-A2**



Double  
lashing plate

**AL-A1**



50T D-ring

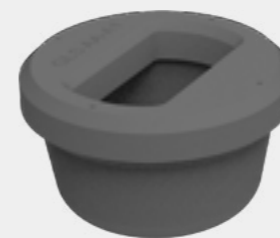
**AL-C1**



36T D-ring

# FIXED FITTINGS IN HOLD

**AA-A1**



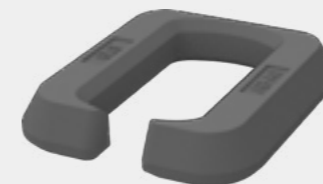
Single flush  
foundation

**AA-A2**



Double  
flush foundation

**AB-A1**



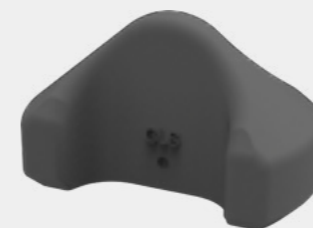
Single base  
foundation

**AB-A2**



Double  
base foundation

**AJ-A1**



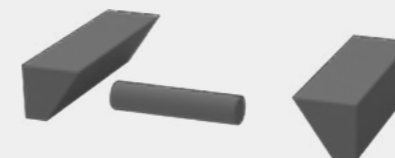
Weldable cone

**AN-A1**



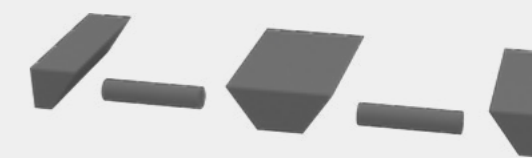
Guide fitting

**AP-A1**



Counter bearing

**AP-A2**



Double  
counter bearing

**BD-J1(OT)**



Operating tool for semi-automatic twistlock

**BD-J1(MT)**



Emergency tool



Railway Transport Lashing



Ro-Ro Ship Lashing

**BD-A2(OT)**



Operating tool for manual twistlock

**BA-K1(OT)**



Spanner for turnbuckle (knob type)



Timber Ship Lashing



Helicopter Lashing

**BE-A1(OT)**



Spanner for bridge fitting

**DA-B1**



Storage bin

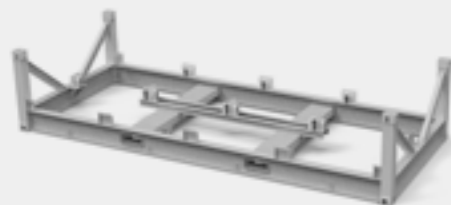


Air Transport Lashing



Wind Power Equipment Lashing

**FR20**



Flat rack 20

**FR40**



Flat rack 40